



ABAY ESDEE  
PAINTS



# **METHOD STATEMENT**

## **Mixing & Application of Flooring Systems**

FEBRUARY 1, 2021 / VERSION 1.0 / ABAY EASDEE PAINTS

# Table of Contents

Sr. No.	Subject	Pg. No.
1	Scope	2
2	Mixing	2
2.1	Mixing Area	2
2.2	General Mixing Equipment	4
2.3	Mixing Procedure	5
2.3.1	Mixing Procedure for two-part Epoxy	5
2.3.2	Mixing Procedure for 2 K thin film PU floor product	6
2.3.3	Mixing Procedure for water based product Tuflor	6
3	Applicaton	6
3.1	Application of 2 part epoxy	6
3.2	Application of 2 K thin film PU prodcut	7
3.3	Application of Tuflor	7
4	Tools and equipment	4
5	Health and safety Recomendation	8
6	Cleaning of tools and waste disposal	9
7	Storage place	9



ABAY ESDEE  
PAINTS



# 1. SCOPE

This method statement describes the step-by-step procedure for the correct mixing and application of the flooring products out of the Abay Esdee Paints floor coating range.2.

## MIXING

### 2.1 MIXING AREA

Locate mixing area to facilitate uninterrupted supply of mixed material to maintain wet edge to get seamless finish. Make sure that all needed

component of product to be applied, mixing tools, measuring scale, mixing equipment, solvent for cleaning and application tools are available and easily accessible. Assign required number of manpower to mixing area for continuous supply of mixed product



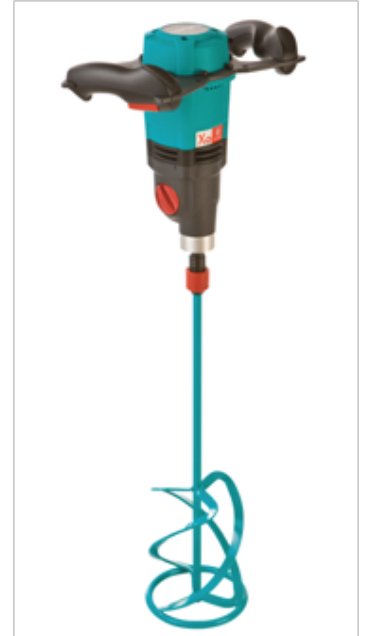
for application. Depending on size of project assign number of manpower. Minimum two people one for opening package and pouring material and other for handling mixing equipment.

## 2.2 GENERAL MIXING EQUIPMENT

Each floor coating product needs to be thoroughly mixed prior to application. Three types of mixing units are recommended depending on the viscosity of the material.

### 2.2.1 DRILL AND MIXING PADDLE

This mixing equipment (Collomix® Xo 6) is recommended for unfilled binders and the mixing of liquid components of filled screeds and mortars (for filled screeds and mortars please use the Double Mixing Paddle or Forced Action Pan Mixer equipment outlined below). First of all pre-mix Component A. Then add Component B and mix thoroughly for a minimum of 3 minutes until the mix is fully homogeneous.



### 2.2.2 DOUBLE MIXING PADDLE (FREE HAND OR ON STAND)

These twin paddle mixer (Collomix® Xo 55 Dou) is the ideal tool for all types of filled binder systems, including screed and mortar mixes. First of all, mix Components A + B together, then put the premixed A + B Component or the liquid binder into the mixing pail, and then add the powder Component C whilst slowly stirring constantly. Mix for a minimum of 3 minutes until the mix is fully homogeneous.



## 2.2.3 FORCED ACTION PAN MIXER

These mixing machine (ColloMatic® XM) is designed for the correct mixing of larger quantities of all types of heavily filled mortars and screeds. First of all, put the powder component in the mixing pail, and then add the premixed A + B Components or liquid binder whilst slowly stirring constantly and slowly. Mix for a minimum of 3 minutes until the mix is fully homogeneous.



## 2.3 MIXING PROCEDURE

### 2.3.1 MIXING PROCEDURE FOR TWO-PART EPOXY

#### MIXING OF PART A AND B

Before use mix part A with mechanically to homogenize it. Add part B and stir for 2 – 3 minutes. To ensure thorough mixing transfer mixed material to another container and mix again for 2 minutes. Avoid overmixing to prevent foaming and air entrainment.

#### MIXING OF FILLER / EXTENDER

After Part A and Part are mixed add recommended filler / extender and mix for 2 minutes with twin shaft mixer.

To ensure thorough mixing transfer mixed material to another container and mix again for 2 minutes. Avoid overmixing to prevent foaming and air entrainment.



## 2.3.2 MIXING PROCEDURE FOR 2 K THIN FILM PU FLOOR PRODUCT

Mixing procedure is same as stated in 2.3.1 but take care to avoid any alcohol containing solvent. Add recommended quantity of Abay PU thinner to adjust viscosity.

## 2.3.3 MIXING PROCEDURE FOR WATER BASED PRODUCT TUFLO

Before use stir the material using low speed electrical stirrer (300 – 400 RPM) until uniform mix has been achieved. Avoid overmixing to prevent foaming and air entrainment.

Dilute paint with 25 % soft water for first coat as primer.

# 3. APPLICATION

## 3.1 APPLICATION OF 2 PART EPOXY

### **PRIMER APPLICATION:**

Apply priming coat using brush, roller or squeegee. Application with Squeegee is preferable followed by back rolling crosswise to get uniform pore free coat. If required apply two coats.



### **Epoxy self levelling screed / Topcoat Application:**

Self levelling Screed is recommended when more than 3 mm thickness is required.

Apply it within the overcoating time. If overcoating time is passed sand previous coat with sand emery paper for proper adhesion.

Pour material and spread evenly with serrated trowel. Turn the serrated trowel and smooth the surface to ensure even thickness and to remove entrapped air.

Roll the applied material with spiked roller in two direction (crosswise) to ensure even thickness and to remove entrapped air.



### 3.2 APPLICATION OF 2K THIN FILM PU PRODUCT

Apply two-part epoxy primer and allow it to dry for recommended period. Mature mixed paint for 15 minutes and apply using brush or roller. Roll in two direction to ensure uniform thickness. To get effective performance, ensure that the painted surface does not come in contact with water, foot and vehicular traffic for next 72 hours.



### 3.3 APPLICATION OF WATER BASED TUFLO

Open the cracks in “V” shape using mechanical cutter and clean well. Apply primer using brush and allow to dry it as recommended. Fill the cracks using appropriate crack filler.

Dilute Tuflo with 25 % soft water to use as primer. Apply first coat on prepared surface and allow to dry it for 4 – 6 hours (at 30°C). Drying time will increase at lower temperature.

Apply second coat undiluted and dry it.



ABAY ESDEE  
PAINTS



Do not apply when ambient temperature is below 10°C or there are chances of dropping in next 4 hours.

To get effective performance, ensure that the painted surface does not come in contact with water, foot and vehicular traffic for next 72 hours.

## 4. TOOLS AND EQUIPMENT



Squeegee



Roller



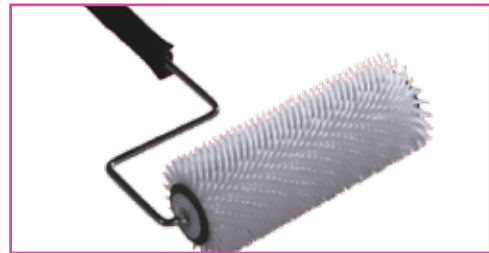
Brush



Serrated Trowel or Toothed trowel



Smooth trowel



Spike roller



Spike shoes



## 5. HEALTH AND SAFETY RECOMMENDATION



Floor coating materials and thinner might cause irritation to eyes, skin, nose and throat.

Use appropriate eye protection all the time while handling these material

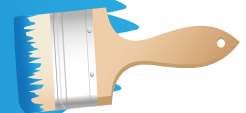
Wear hand gloves, safety shoes and appropriate skin protector all the time while handling these materials.

Always wash hands with suitable soap and water before consuming food.

Refer Material safety data sheet for safe handling, storage and disposal of waste.



## 6. CLEANING OF TOOLS AND WASTE DISPOSAL



Clean all tools immediately after use with epoxy thinner / PU thinner / water as recommended.

Remove dried and hardened material mechanically.

Do not dispose surplus material and cleaning waste into drains to

prevent pollution of soil and water. Dispose it as specified in Material safety data sheet.

